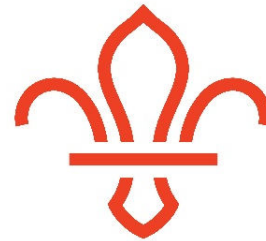
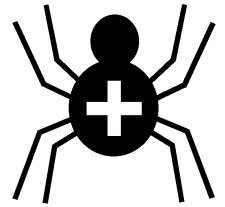


Silver Cross Scout Centre

Activity Risk Assessment



ScoutsCymru



Activity	Climbing and Abseiling	Venue	On-site
----------	------------------------	-------	---------

Hazard	Who might be harmed	Controls	Revue and revision
Being struck by falling equipment, climber or loose items	Any / all individuals	Everybody must wear correctly-fitted helmets at all times. Great care required at top of tower not to drop or throw any equipment/materials to the ground. Unused equipment to be clipped to either harness or points on the tower. Supervisor must pre-brief group about only those people climbing to enter the fenced area surrounding tower. Supervisor must ensure a safe area for group to remain while not climbing. Supervisor must ensure that the ropes are set up to minimise the risk of a climber swinging in the event of a fall.	agreed
Falling while climbing / abseiling	Participant	Supervisor to ensure that the ropes are set up in such a way as to minimise the risk of injury in the event of a slip or fall by the climber. In the case of abseiling, a safety rope system must be employed.	agreed
Falling from top of tower	Participant / instructor	Supervisor must ensure that no unsupervised persons are allowed at the top. If persons are at the top, they must be anchored securely at all times.	agreed
Tripping / slipping / banging head	Any / all individuals	Supervisor to pre-brief the group about tripping/sliding on ladders and scaffolding boards or bumping into the scaffolding of the tower. Everybody involved must wear correctly-fitted climbing helmets at all times. All group members to wear suitable footwear. Supervisor must ensure a safe area for group to remain while not climbing.	agreed
Falling out of climbing harness	Participant	Supervisor to ensure that all harnesses are correctly fitted and adjusted before climbing takes place – this to include every time harness is removed.	agreed

Friction burns in abseiling	Participant	Minimised by instructor's briefing. Wearing of protective gloves if appropriate.	agreed
Equipment failure	Any / all individuals	Instructors responsible for ensuring that equipment is logged, stored and repaired/replaced as necessary and conforms to CE requirements. Instructors to ensure that all equipment used is suitable for the activity and complies with the necessary safety standards. Supervisor must ensure that all equipment used is checked and inspected for damage before and after use.	agreed
Anchor failure and integrity of tower	Any / all individuals	Structure of the tower to be checked on a regular basis. Supervisor will physically check the anchor points are sound and visually check bolts and clamps have not been tampered with. Climbing holds anchorage to be checked on a regular basis. All ropes correctly anchored with slings, karabiners and hitches/knots.	agreed
Belayer pulled off balance / unable to hold a fall	Belayer	Area used for belaying to be free of obstacles. Where indirect belays are used and there is any weight difference between the climber and belayer then a suitable anchor must be used for the belayer. Belayer to ensure no excessive slack in the system.	agreed
Long hair getting tangled in Fig 8 descender	Participant	Instructors to ensure long hair is tied back before taking part in activity	agreed
Other controls in place	Instructors are first-aid trained. First-aid kit carried.		

**Rev 06
June 2018**