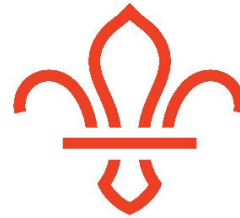
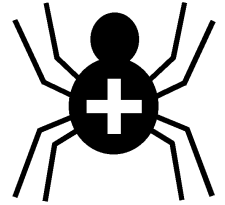


Silver Cross Scout Centre

Activity Risk Assessment



ScoutsCymru



Activity	Soft Crossbows	Venue	On site
-----------------	-----------------------	--------------	----------------

Hazard	Who might be harmed	Controls	Revue and revision
Injury to eye	Participant	Safety glasses must be worn.	
Injury from tin cans	Participant	Cans checked for sharp edges – damaged cans removed.	
Injury from rubber dart	All	Crossbows to be shot at targets/cans only. Crossbows NOT to be aimed at people.	
Tripping over bags, coats etc.	All	Initial briefing to include about the dangers that may be present in the immediate area in which the activity is taking place. Coats/bags etc. to be stowed under seating and not on main floor.	

Other controls in place	Dedicated range. First Aid in Stone Tent (Office)
-------------------------	---

Rev 01
June 2018